

MUTOH



WWW.DIGITALCOLORINK.COM

TOLL: 877.616.8600

BALTIMORE, MD | CHARLOTTE, NC



VALUEJET 1628MH MULTI-PURPOSE PRINTER

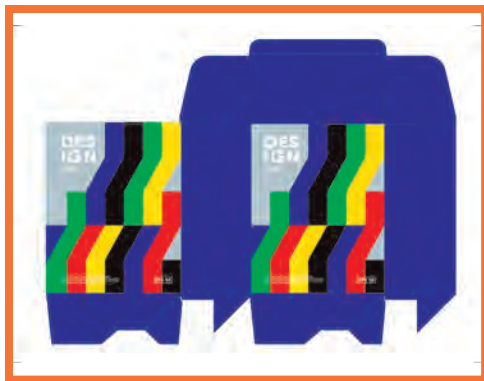
*The most versatile
printer on the market*



Powered by MUTOH's genuine VerteLith RIP Software
bundled with FlexiDESIGNER MUTOH Edition 21
a \$2,199.00 value



ValueJet 1628MH



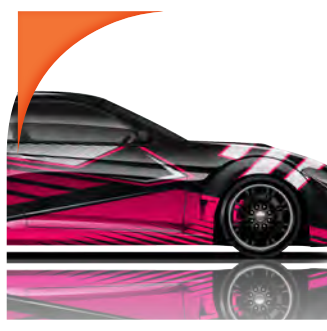
PACKAGING/PROTOTYPING

The ValueJet 1628MH multi-purpose hybrid printer is ideally suited for the production of high-quality graphics. It is powered by MUTOH's new genuine VerteLith™ RIP software, bundled with FlexiDESIGNER MUTOH Edition 21, a \$2,199.00 value. VerteLith RIP optimizes all of the capabilities the VJ-1628MH has to offer and produces the best possible gradients, skin tones and vivid colors.

This hybrid model is the most versatile printer on the market and is ideally-suited for use in packaging prototyping, signage, POP displays, specialty printing and more. With enhanced print quality supporting up to 8 colors (CMYKx2, CMYKWhWh) and a wide color gamut, the VJ-1628MH gives true-to-life skin tones and smooth gradations. MP31 multi-purpose inks give outstanding adhesion and color properties that bind to substrate surfaces giving a natural, vibrant finish to projects.



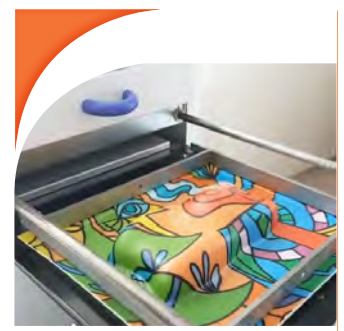
POP DISPLAYS



VEHICLE WRAPS



YARD SIGNAGE



THERMOFORMING
PRINTS

MUTOH

Flexibility to print on roll/rigid materials

Transport roller system

Blower heater

Automatic media height

Includes 8 ink slots

Standard 66lb take-up system

1-800-99MUTOH

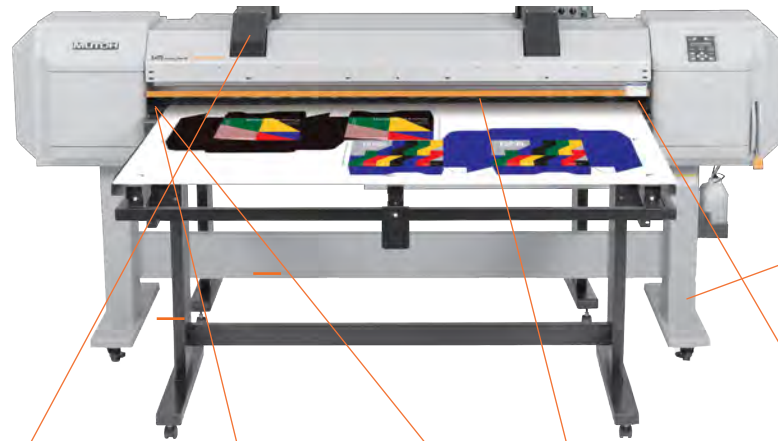
www.MUTOH.com



ValueJet 1628MH

Powered by VerteLith™

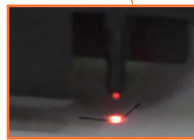
MUTOH'S GENUINE RIP SOFTWARE BUNDLED WITH FLEXIDESIGNER MUTOH EDITION 21



Standard 66lb Take-up System



Blower Heater



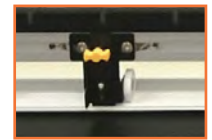
Automatic Media Height Adjustment Mechanism



Head Strike Prevention Sensor



Transport Roller System



Media Retainer

VJ-1628MH printer features include:

- Flexibility to print on roll or rigid materials.
- Multi-purpose MP31 inks.
- Solvent-based ink with outstanding adhesion and color properties giving a natural, vibrant finish to projects.
- Enhanced print quality, supporting up to 8 colors with CMYKx2 and CMYKWhWh.
- Wide color gamut and improved color stability.
- Blower heater to speed drying time.

- New built-in circulation system for white & magenta inks assures color consistency and prevents clogging.
- Custom roller selection function allows each pressure roller to be set independently.

MUTOH's genuine VerteLith RIP software bundled with FlexiDESIGNER MUTOH Edition 21 optimizes the VJ-1628MH through these key features:

- Auto-population of named Pantone

coated/uncoated spot colors.

- MUTOH Clear Tone half tone technology.
- MUTOH CMYK wide color gamut ICC profile.
- Automated layout processing and printing.
- Soft proof.
- "What-you-see-is-what-you-get" RIP preview.
- Tab customization.
- Color management function.
- Finishing bleed processing function.
- Printing log function.
- Automated multi-layer printing.

VALUEJET 1628MH SPECIFICATIONS

| | |
|----------------------|--|
| Printing systems | On-demand Micro Piezo Inkjet Technology |
| Print head height | Automatic |
| Print head | 1 (1440dpi, 180 nozzles x 8 rows) |
| Max print resolution | 1440x1440dpi (16 pass) |
| Print modes | 1440/1080/720/360dpi (total 6 modes) |
| Media width | 64" |
| Media capacity | ø 5.9" dia / 2" & 3" cores / Roll media 66lbs or less Rigid media max 33lbs or less |
| Max media thickness | 0.62 in |
| Max printable width | 63.6 in |
| Media drying system | Blower heater system: 1200Wx2 |
| RIP software | VerteLith™, bundled with FlexiDESIGNER MUTOH Edition 21 |

| | | |
|-----|--------------|--------------------------------------|
| Ink | Type | MP31 multi-purpose |
| | Ink Set | Up to 8 colors - CMYKx2 and CMYKWhWh |
| | Volume | 500ml |
| | No. of slots | 8 |

| | |
|-----------------------|---|
| Interface | Gigabit-Ethernet (1000BASE-T) |
| Power Requirements | AC 100-120V± 10%, 50/60Hz ± 1Hz |
| Printable Environment | Temperature: 68-89.6°F Humidity: 40-60%RH (non condensing) Rec. environment: Temperature: 71.6-86°F |
| Power Consumption | Main: Operation status 2300W or less Standby: 65W or less |
| Dimensions (WxDxH) | Printer including stand: 106.2"x35.7"x51.26" |
| Weight | Body: 369.3lb Stand: 72.8lb |