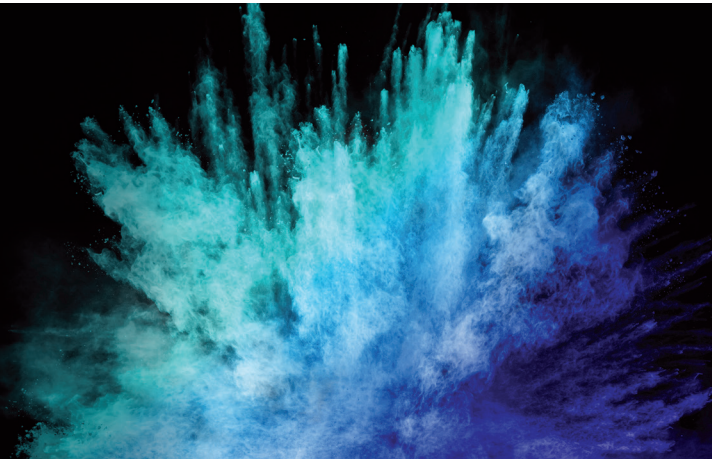




ENDURA® ART

COST-EFFECTIVE, HIGH-SPEED PRINTING



DESIGNED FOR POSTER PERFORMANCE

ENDURA® ART is a bright white cellulose-based Acid free flat Matte photo realistic paper for commercial art reproduction and high-quality photographic printing on Eco-Solvent, Latex and UV printing.

Endura® Art is a 17mil, 345 gsm heavy weight paper with refined finish for excellent linearization and color accuracy.

The 3.5 matte finish offers exceptional ink adhesion with an elegant finish.



ART



ATTRACTIONS



RETAIL

FEATURES AND BENEFITS:

- Fast Eco-Solvent dry times
- Resists dents and dings
- FSC® certified
- Latex, Eco-Solvent, UV, and UVgel
- Reduced ink limits
- Recyclable and PVC free

APPLICATIONS:

- Posters
- Window Signage
- Temporary Outdoor Displays
- POP (Point of Purchase)
- Hanging Signage

www.neenahpaper.com/wideformat



TECHNICAL DATA ▶

GREEN ATTRIBUTES ▶

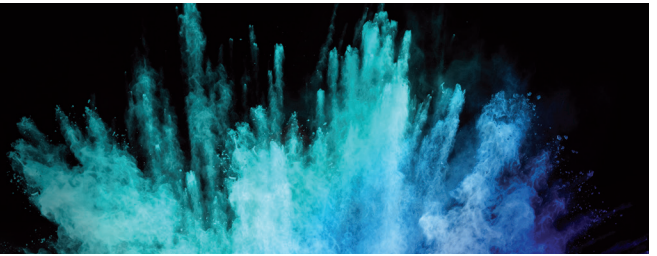
STOCK LIST ▶

PRINT CONSIDERATIONS ▶



ENDURA® ART

COST-EFFECTIVE, HIGH-SPEED PRINTING



TECHNICAL DATA

	Finish	Caliper (Nominal)	Caliper (Actual)	Basis Weight (gsm)	Gloss @ 60°	Brightness (GE) %	Whiteness (We) %	Opacity %
Endura® Art ☺	Matte	17mil	18mil	345	3.5	95.5	100	100



Certified for HP Latex Inks

*These are typical values of the product as produced representing a manufacturing range. Slight variations may occur during the manufacturing process. *Gsm values do not include release liner.*

GREEN ATTRIBUTES

We all know paper prints better than plastic! It's also more widely recycled. Our paper-based portfolio provides a sustainable option, with many post-consumer options available as well.

At NEENAH, sustainability is about manufacturing our products through processes that minimize negative environmental impacts while conserving energy and natural resources.



FSC® CERTIFIED

Supports well-managed forests as well as the responsible use of forest resources.



U.S. EPA SmartWay Transport Partnership ensures environmentally-responsible delivery of our products.

STOCK LIST

Item Number	Grade	Finish	Caliper (thickness)	Roll Size (inches/feet)	Rolls per Pallet
EAS-1754100M-01	Endura® Art	Matte	17mil / 345 gsm	54" x 100'	30
EAS-173020M-01	Endura® Art	Matte	17mil / 345 gsm	30" x 20' (Sample Roll)	30



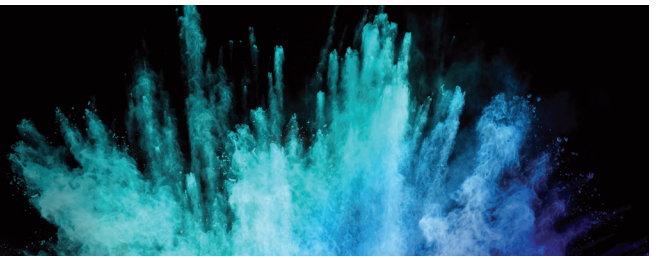
Custom sizes are available with minimum quantities required. Call for a quote.





ENDURA® ART

COST-EFFECTIVE, HIGH-SPEED PRINTING

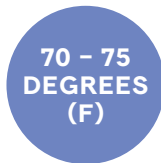


PRINT CONSIDERATIONS

To ensure optimum performance, below is a list of recommended handling, printing, and finishing processes for Endura® Wide Format Papers. We encourage testing on sample sheets (available in sample rolls at NO charge via our Customer Service department) prior to production to ensure the desired results are achieved.

HANDLING / STORAGE

- Product should remain in the original packaging material until ready for use.
- Maintain storage and pressroom temperature of 70 – 75 degrees (F) and 40 – 55% relative humidity (RH).
- Like all roll materials Endura® should be stored in a cradle or soft surface to avoid flat spots.
- For best results, keep unused product wrapped and stored as recommended above – exposure to wide fluctuations in temperature or humidity may adversely affect performance.



PREPRESS / RIP

Endura® Art runs optimal with an appropriate profile that allows for precise ink limits.

Contact us for profiles: neenahpaper.com/wide-format

For testing, OEM supplied coated paper profiles are a fine alternative.

MATERIAL HANDLING

Endura® Art is available in 54" x 100' rolls on a 3" core. Rolls are print side out with low tack adhesive securing the tail to the core.

Always use caution and practice safe handling of rolls.

PRINTING

Endura® is printable on **Solvent, Eco-Solvent, Latex, UV, and UVgel** technologies. Endura® Art is a **commercial reproduction** solution and not supported on aqueous printers.



Certified for HP Latex Inks

CUTTING

Endura® can be cut by hand, CNC flatbed cutters, and rotary slitters. Edges can be deckled with a standard deckle ruler.

FINISHING

Endura® Art can be mounted with any mounting film.

PACKAGING/ ROLLING

Endura® can be rolled for shipping. If any curl memory exists, reverse roll and unroll to flatten. For best results art prints should be shipped flat.

APPLICATIONS

Endura® Art is designed for high quality commercial art reproduction and photographic printing. The acid free Cellulose-based paper will not yellow or shift making it perfect for cost effective art solutions.

NOTE: For setup assistance email your sales executive or technical manager.



www.digitalcolorink.com
877-616-8600

Baltimore, MD | Charlotte, NC



The mark of responsible forestry

Please look for FSC® certified products